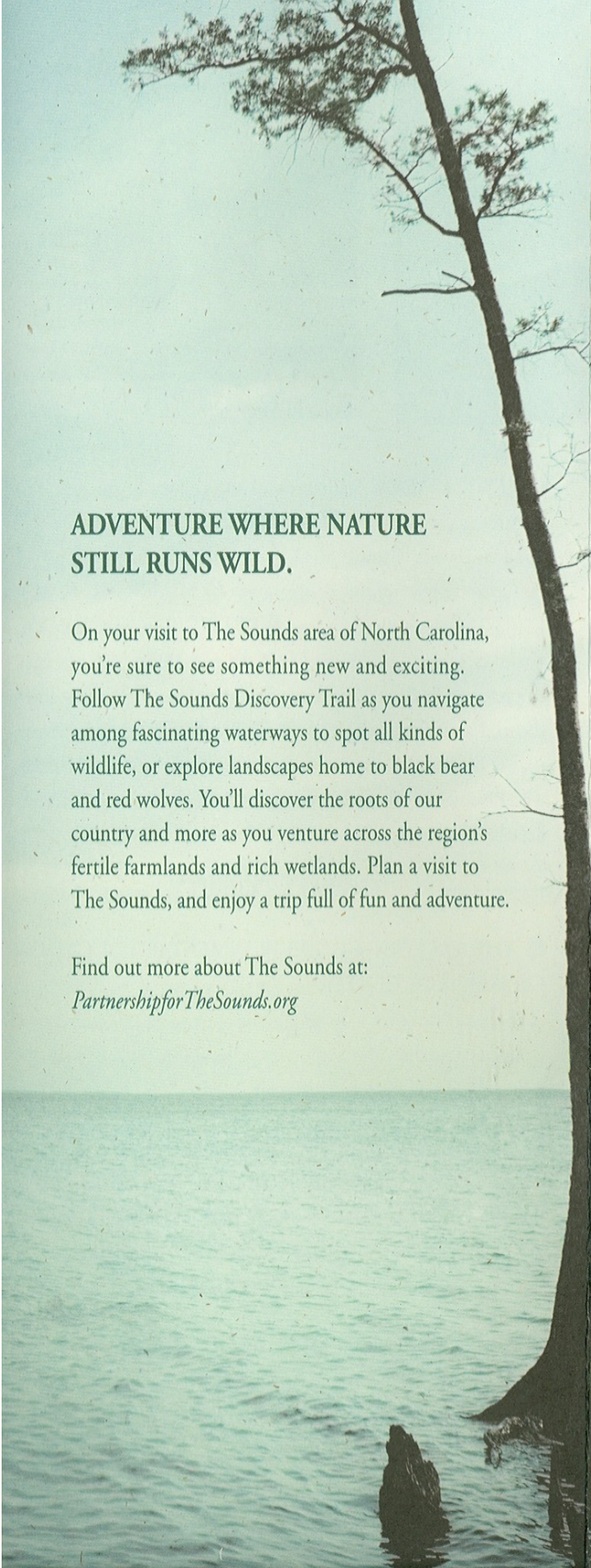


The SOUNDS
DISCOVERY TRAIL

PARTNERSHIP
for the Sounds

Deep roots & wild waters





ADVENTURE WHERE NATURE STILL RUNS WILD.

On your visit to The Sounds area of North Carolina, you're sure to see something new and exciting. Follow The Sounds Discovery Trail as you navigate among fascinating waterways to spot all kinds of wildlife, or explore landscapes home to black bear and red wolves. You'll discover the roots of our country and more as you venture across the region's fertile farmlands and rich wetlands. Plan a visit to The Sounds, and enjoy a trip full of fun and adventure.

Find out more about The Sounds at:
PartnershipforTheSounds.org





The SOUNDS DISCOVERY TRAIL

- 1 Hope Plantation
- 2 Windsor
 - Roanoke/Cashie River Center
 - Historic Windsor
 - Livermon Park and Mini Zoo
 - Cashie Wetlands Walk
- 3 Sans Souci Ferry
- 4 Plymouth
 - Historic Plymouth
 - Port O' Plymouth Museum
 - Roanoke River Lighthouse
 - Roanoke River Maritime Museum
- 5 Davenport House
- 6 Somerset Place
- 7 Pettigrew State Park
- 8 The Eastern 4-H Environmental Education Conference Center
- 9 Columbia
 - Historic Columbia
 - Columbia Theater Cultural Resources Center
 - Pocosin Arts
 - Tyrrell County Visitor's Center
 - Walter B. Jones, Sr. Center for the Sounds
 - Scuppernong River Interpretive Trail
- 10 Pocosin Lakes National Wildlife Refuge
- 11 Palmetto-Peartree Preserve
- 12 Intracoastal Waterway
- 13 Fairfield
- 14 Mattamuskeet National Wildlife Refuge
- 15 Mattamuskeet Lodge
- 16 Octagon House
- 17 Lake Landing Historic District
- 18 Village of Engelhard
- 19 Village of Swan Quarter
- 20 Ocracoke
- 21 Ponzer Area
- 22 Belhaven Area
 - River Forest Manor
 - Belhaven Memorial Museum
- 23 Bayview Aurora Ferry
- 24 Aurora Fossil Museum
- 25 Historic Bath
 - Historic Bath Visitor's Center
- 26 Terra Ceia Area
- 27 Goose Creek State Park
- 28 Washington
 - Historic Washington
 - The Turnage Theatre
 - Beaufort County Arts Council
 - North Carolina Estuarium

● Partnership for The Sounds facility



Hope Plantation



Roanoke/Cashie River Center



Roanoke River Lighthouse

BERTIE COUNTY

1 HOPE PLANTATION: This Federal plantation home of early NC Governor David Stone features a complex of restored buildings and furnishings. Original construction was completed in 1803. With the help of the Historic Hope Foundation, it is now listed on the National Register of Historic Places. The houses have limited handicapped accessibility; however, the adjacent **EDUCATIONAL CENTER** is fully handicapped accessible. hopeplantation.org

2 ROANOKE/CASHIE RIVER CENTER: This Partnership for the Sounds educational center in Windsor interprets the Roanoke River system as it meanders through eastern NC. Exhibits focus on the neotropical migratory songbirds that flock to forests of the Roanoke and Cashie Rivers in spring. The RCRC also has a boardwalk along the Cashie providing scenery, birding opportunities, and canoeing access. And you can escape civilization awhile on a pontoon boat ride down the unspoiled Cashie. Canoe rentals available. PartnershipforTheSounds.org

3 HISTORIC WINDSOR: Listed on the National Register of Historic Places, Windsor was first known as Gray's Landing in the early 1700s. Over 250 years of history can be found in its Historic District, including the Bertie County Courthouse (c.1887) and the Freeman Hotel (c.1840), a Greek Revival building and currently home to the Windsor Chamber of Commerce. Other sites include St. Thomas Episcopal Church (c.1839), the Gray-Gillam and J.B. Gillam Houses (c.1790), and Windsor Castle (c.1858).

LIVERMON PARK AND MINI ZOO is within walking distance of downtown Windsor and features a children's playground, picnic tables, grills, and a mini zoo with over 30 different varieties of animals, including buffalos and exotic birds. Group reservations available. Across the street is the **CASHIE WETLANDS WALK**, an interpretive boardwalk through bottomlands on the Cashie River. Canoes are available free for exploring the waterways. windsor-bertie.com

5 SANS SOUCI FERRY: This cable-drawn free ferry, one of only two surviving such ferries in North Carolina, is located on State Road 1500, 1.8 miles off Highway 308. A picturesque ride across the Cashie River takes about 15 minutes. Whether you approach from the north or the south, if the ferry isn't tied up on your side of the river, just honk your horn and wait a few minutes for it to arrive.

WASHINGTON COUNTY

4 HISTORIC PLYMOUTH: Washington County's European heritage began when it was explored by Ralph Lane, Governor of the first English Colony at Roanoke Island. The region, bordered on the north by the Albemarle Sound and the Roanoke River, was also well-traveled by Native Americans for many generations prior. Today, the town of Plymouth reflects this natural and cultural richness.

Plymouth's diversity in architecture has earned the town a place on the National Historic Register. The Washington County Courthouse (c.1918-19), Latham House (c.1850), and Ausbon House (c.1830) are highlights among the downtown structures. The Grace Episcopal Church (c.1860-61) on Water Street played many roles in Plymouth's history, and its graveyard merits study from any visitor. A brochure is available. visitplymouthnc.com

The nationally recognized **PORT O'PLYMOUTH MUSEUM** in downtown has exhibits about Native American and colonial history of Washington County. A major portion of the museum is dedicated to the Battle of Plymouth, an important Civil War conflict in this region, and includes a replica of the ironclad CSS *Albemarle*. Each year the museum hosts the "Living History Weekend" on the third weekend in April. visitplymouthnc.com

On the other side of downtown, you'll find the **ROANOKE RIVER LIGHTHOUSE**, a full-scale replica of the inshore lighthouses once found throughout The Sounds. Across the street is the **ROANOKE RIVER MARITIME MUSEUM**, which displays classic boats, motors, and other nautical artifacts dating from the late 1800s. roanokeriverlighthouse.org

CRESWELL AREA: Settlement of the county began near this picturesque town at the **5 DAVENPORT HOUSE**, which still stands as a working museum. Creswell is also the gateway to two of the area's major tourist destinations, **6 SOMERSET PLACE** (c.1838), a state historic site, and **7 PETTIGREW STATE PARK**. Somerset portrays plantation life of the mid-1800s, with a special emphasis on the lives of its slaves. Pettigrew State Park is just down the road and offers a chance to explore and camp in a magnificent coastal forest. Both sites are adjacent to scenic **LAKE PHELPS**, where Native American dugout canoes dating back over 4,000 years have been uncovered. visitwashingtoncountync.com

TYRRELL COUNTY

8 THE EASTERN 4-H ENVIRONMENTAL EDUCATION CONFERENCE CENTER in Tyrrell County offers nature and science camps for youths in summer and opportunities for innovative group retreats throughout the year at beautiful Bulls Bay on the Albemarle Sound. eastern4hcenter.org

9 HISTORIC COLUMBIA: The area now comprised by Tyrrell County and the Scuppernong River was explored by the original Roanoke Island colonists in the late 1500s. Today, the county seat of Columbia sits on the tree-lined Scuppernong and epitomizes the small-town charm of The Sounds. ecotourismnc.org

THE HISTORIC COLUMBIA WALKING TOUR leads past many unique sites in the downtown area, including the Combs-Hussey House (c.1890) and St. Andrews Episcopal Church (c.1909).

On Main Street, visit the **10 COLUMBIA THEATER CULTURAL RESOURCES CENTER** and find exhibits exploring human interaction with the environment in the area, especially as reflected in the history of farming, fishing, and forestry. A popular movie palace from the 1930s-1960s, the Theater was renovated into a museum by the Partnership in the 1990s. partnershipforthesounds.org

Several interesting niche stores and local restaurants are also located downtown, and a visit isn't complete without a stop at **POCOSIN ARTS**, a gallery that celebrates regional folk and environmental art. Pocosin Arts also hosts numerous workshops involving many types of creative expression. pocosinarts.org

The **11 TYRRELL COUNTY VISITOR'S CENTER** is located on US 64 in Columbia, overlooking the Scuppernong River. Operated by the Partnership, TCVC has tourist information about sites throughout the region, as well as public restrooms and picnic tables. Next door find the **12 WALTER B. JONES SR. CENTER FOR THE SOUNDS**, which has exhibits and a video about the **13 POCOSIN LAKES NATIONAL WILDLIFE REFUGE**. This refuge encompasses over 110,000 acres in Tyrrell, Washington and Hyde counties and provides vital habitat for wildlife and waterfowl, including the critically endangered red wolf. fus.gov/pocosinlakes

One of the region's most interesting ecosystems can be explored firsthand on the **SCUPPERNONG RIVER INTERPRETIVE TRAIL**, next to the Center for the Sounds. The ¾ mile trail loops through a pristine bottomland swamp along the Scuppernong. Signage explains blackwater ecosystems and encourages visitors to look, listen, and learn while they stroll through nature's garden.

14 PALMETTO-PEARTREE PRESERVE: This 10,000-acre natural area has a trail and boardwalk that winds to the Albemarle Sound and back through a forest with active colonies of endangered red-cockaded woodpeckers. P3 offers a rare opportunity to see RCWs — the only woodpeckers that build nest cavities in live trees — in a completely natural setting. palmettopeartree.org



Mattamuskeet Lodge



Octagon House



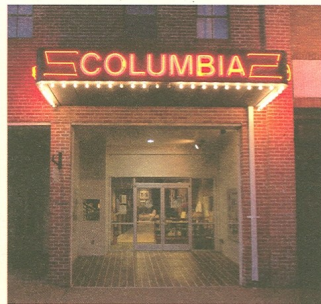
Peony Fields



Pocosin Lakes National Wildlife Refuge



Tyrrell County Visitor's Center



Columbia Theater

HYDE COUNTY

A high-rise bridge on Highway 94 crosses the **12 INTRACOASTAL WATERWAY** in eastern Hyde County. The ICW was dug in the 1920s and '30s to provide secure inshore travel for vessels along the Atlantic seaboard. This bridge crosses a section that was cut to connect the Alligator and Pungo Rivers, thus allowing boat passage across the entire A-P peninsula. Just south of the bridge is the village of **13 FAIRFIELD**, which is listed on the National Register of Historic Places and has several homes, churches, and buildings with distinctive architectural features.

14 MATTAMUSKEET NATIONAL WILDLIFE REFUGE: Established in 1934, this refuge consists of approximately 50,000 acres of water, marsh, and forest, including Lake Mattamuskeet, the largest natural lake in NC. The wide, shallow lake offers spectacular birding in winter as it welcomes flocks of tundra swans, snow geese, and other migratory waterfowl. Nearby **SWAN QUARTER NATIONAL WILDLIFE REFUGE** also provides opportunities to see and experience the nature of The Sounds. fws.gov/mattamuskeet

15 MATTAMUSKEET LODGE: Completed in 1915, this building once housed huge pumps that were used to drain Lake Mattamuskeet so farming and development could take place in the lakebed. This ambitious effort failed in the early 1930s though, and in 1934, the lake became a wildlife refuge, and the Civilian Conservation Corps converted the plant into a hunting lodge that was active until the 1970s. The Lodge was listed on the National Register of Historic Places in 1981. In 2007, the federal government transferred ownership of the Lodge to the State of North Carolina so it could be restored and operated as a public facility dedicated to the conservation of natural and cultural resources in this region. The state's Wildlife Resources Commission is leading this important renovation project.

16 OCTAGON HOUSE: Just outside of Engelhard on US 264 is this unique structure, so named for its eight-sided construction. Built in 1857, the Partnership now helps keep the home open for tours and visitor information. partnershipforthesounds.org

17 LAKE LANDING HISTORIC DISTRICT: Twenty-five homes, churches, and other buildings comprise this tour of 19th-century rural architectural history, encompassing 13,400 acres south of Lake Mattamuskeet. The noted Indian village of Pomeiock, depicted in John White's paintings from 1585, was also in this area.

18 VILLAGE OF ENGELHARD: Possibly settled as early as the 1650s, this fishing village sits alongside Far Creek, where seafood is unloaded daily off boats that ply the Pamlico Sound. Several long-running businesses, such as R. S. Spencer General Merchandise (1900) and C. Gilbert Gibbs Hardware (1905), are still active in town.

19 VILLAGE OF SWAN QUARTER: The Hyde County seat since 1836, this fishing/farming village lays claim to a miracle in "The Church Moved by the Hand of God." Travelers to Ocracoke board the Swan Quarter/Ocracoke Ferry here. hydecountry.org

20 **OCRACOE (southern Outer Banks): A 2-1/2 hour ferry ride away from the mainland lies Ocracoke Island, with 16 miles of completely undeveloped ocean beach on the **CAPE HATTERAS NATIONAL SEASHORE**. The island's lone village has over 200 homes and buildings on the National Register of Historic Places. The Ocracoke Lighthouse, built in 1823, still casts its light out to sea, while nearby in the British Cemetery, stories of those lost at sea wait to be told. ocracokevillage.com

21 PONZER AREA: Cross the ICW again on US 264 in western Hyde County, with the Pungo River visible in the distance. Also enjoy the panoramic vista across a picturesque needlerush marsh as you approach the Hyde/Beaufort County line.

BEAUFORT COUNTY

22 BELHAVEN AREA: With the construction of a railroad in the late 1800s, the area known as Jack's Neck, located on the Pungo River, began its evolution from a quiet community into the town we know today as Belhaven (which means "beautiful harbor"). Stroll through downtown, enjoy elegant dining at **RIVER FOREST MANOR** (c.1904), or have fun at the town's annual 4th of July celebration. And get your eyes widened at the **BELHAVEN MEMORIAL MUSEUM**, which contains a fascinating array of artifacts and curiosities. belhavenmc.us

23 **BAYVIEW-AURORA FERRY: Stay on Highway 92 out of Belhaven heading to Bath, and you'll reach the free ferry across the Pamlico River between Bayview and Aurora. This 45-minute trip gives an unforgettable view of the Pamlico River as it approaches Pamlico Sound. On the south side of the river is the **24 AURORA FOSSIL MUSEUM**, which explores the secrets of an ancient ocean bed uncovered by a local phosphate mine. Visitors can sift through mined material to search for prehistoric shark's teeth and millions of other fossils. aurorafossilmuseum.com

25 HISTORIC BATH: Bath was established by English settlers and became NC's first incorporated town in 1705. Its location provided safe harbor and easy access to the Pamlico River and the Atlantic Ocean, which is one reason Edward Teach, better known as the pirate Blackbeard, settled there briefly a few years later. Stroll the quiet streets and visit historic St. Thomas Church (c.1750) and the Van Der Veer (c. late 18th century) and Bonner (c.1835) homes. Picnic on the shores of Bath Creek, and visit the **HISTORIC BATH VISITORS CENTER** on Carteret Street. beaufort-county.com/Bath

26 TERRA CEIA AREA: Founded by immigrants from Holland, Terra Ceia (heavenly earth) is located off Highway 32 between Plymouth and Washington. The community is one of the largest tulip-growing areas on the East Coast, with wide fields of color spreading across the land in spring. terraceiafarms.com

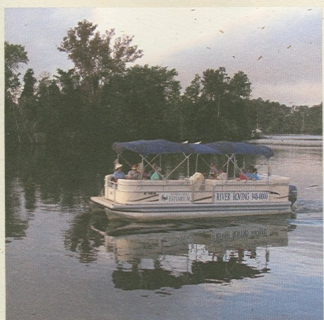
27 GOOSE CREEK STATE PARK: Discover giant oaks draped in Spanish moss where the Secotan and Pamlico Indians once walked this quiet land. Birders can spot dozens of species in the park's upland forest, and an array of flora and fauna thrive in the brackish, low-lying ecosystem. Boating, canoeing, fishing, hiking, and swimming in the Pamlico await you.

28 HISTORIC WASHINGTON: The Original Washington (first community in the nation named for General George Washington) provides a great place to start or end your tour of The Sounds. Take a walk along the waterfront overlooking the Pamlico River and tour Washington's graceful Historic District, with over 30 noteworthy structures dating from the late 1700s. visitwashingtonnc.com **THE TURNAGE THEATRE**, an old Vaudeville showhouse renovated in 2007, now brings an array of musical and theatrical events to the community throughout the year. turnagetheatre.com Enjoy the talents of local artists at the **BEAUFORT COUNTY ARTS COUNCIL**, housed in a beautifully restored railroad depot. beaufortcountyartsCouncil.org And be sure to look for whimsical and colorfully decorated crabs throughout downtown, which were created as part of a special fundraising project in 2007.

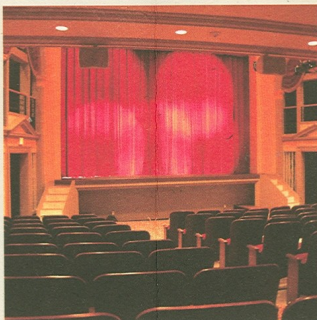
THE NORTH CAROLINA ESTUARIUM on the Pamlico River waterfront contains over 200 exhibits and unique environmental artworks. Operated by the Partnership, the Estuarium interprets NC's estuarine systems—sounds and coastal rivers—and provides an entertaining and educational experience for people of all ages. Make your visit even more memorable by taking a free pontoon boat ride to explore habitats and history at the edge of The Sounds. partnershipforthesounds.org

Find out more about The Sounds at PartnershipforTheSounds.org.

● Partnership for The Sounds facility ** Ferry Trip



Pamlico River Boat Tours



Turnage Theatre



North Carolina Estuarium

For Travel & Lodging Information:

Partnership For The Sounds

P.O. Box 55
Columbia, NC 27925
252.796.1000

Washington Visitor Center

138 S. Market Street
Washington, NC 27889
800.999.3857

**Windsor-Bertie Area
Chamber of Commerce**

102 N. York Street
Windsor, NC 27983
252.794.4277

**Greater Hyde County
Chamber of Commerce**

P.O. Box 178
Swan Quarter, NC 27885
888.493.3826

Tyrrell County Visitor's Center

203 S. Ludington Street
Columbia, NC 27925
252.796.0723

**Washington County
Travel & Tourism Authority**

701 Washington Street
Plymouth, NC 27962
252.793.3248

